

Under the Magnifying Glass: No.9 A New Imperforate Discovery by Malcolm Barton and Kim Stuckey



Figure 2 – The unique top pane of the imperforate Early Settlements 25p

Our last Under the Magnifying Glass mentioned ebay as a source of potential new flaws. This time we find highlight another ebay discovery; however a magnifying glass is not needed to see this variety!

An ebay seller “131me” was selling at the time of writing the 1981 Early Settlements 25p value with the left hand side of the left stamp in the sheet imperforate. The sheet of 50 was printed in two panes of five rows of five stamps. Therefore there could be 10 stamps from the two panes from each sheet with the error.

The seller has on offer a complete left hand column of one pane; this is illustrated to the left. It was being offered on ebay for £15,000 (this included free shipping!).

It seems that maybe two sheets existed with the variety from the other items on offer from the same seller, but it appears this is a unique pane, as the seller (or someone else) has broken the other stamps into pairs and singles, an example of which is shown below.

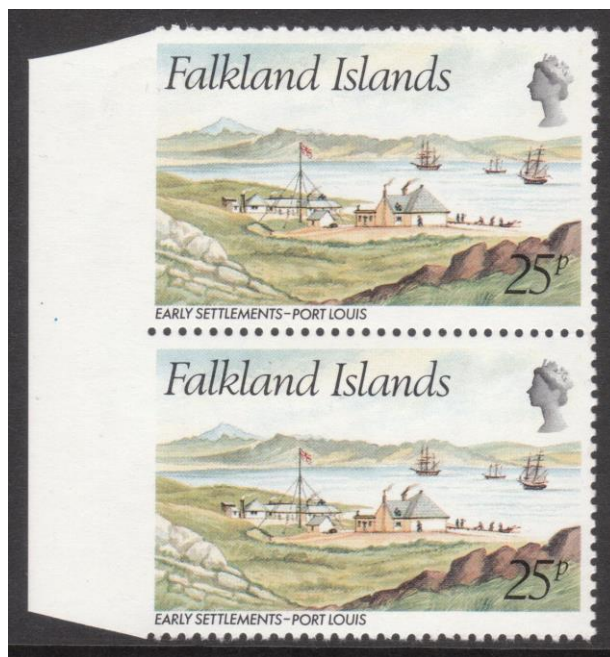


Figure 1 – One of the pairs of Early Settlements imperforates

On one of the pairs the description states that “There is a light paper bend in the center part of margin running top to bottom”.

We wondered why a gutter pair of the variety was not kept, as that would have been a unique item, but perhaps the seller thought a complete pane column was a better selling option.

So a new variety for the next edition of the Stefan Heijtz catalogue. There is still more information to be discovered on this variety; was it printers waste that escaped or was it a purchase from Crown Agents or the Islands?