

Under the Magnifying Glass: No.21 Sir Geoffrey's Gems by Malcolm Barton and Kim Stuckey

Recently we have had the pleasure of visiting Sir Geoffrey Palmer to look at his extensive Falkland Islands collection. As well as superb examples of each printing of the key stamps, many in blocks that really emphasise the colour shades, he has a wonderful collection of watermark and printing varieties. It truly is a reference collection of "v" and "wmk" listings in the Gibbons and Heijtz catalogues.

With his permission we are reproducing some of the Heijtz catalogue varieties and proofs that are not illustrated in the current edition, to assist Study Group members with their own stamps. There is little need for detailed explanation; the images of the stamps speak for themselves.

South Georgia and Falkland Islands Dependencies



Figure 1 – A stunning array of South Georgia and FID varieties

The stamps illustrated are from the top: the 1971 1p on 1d decimal overprint in a lovely offset print on the reverse of the stamp (SH unlisted) and the 1972 50th Anniversary of the Death of Sir Ernest Shackleton, the 1½p imperforate stamp in a left marginal block of four (SH109v1).

Below that are the two varieties from the 1981 Plants issue, the 3p black and red printed double (SH163v1) in an important plate block of four (with an enlargement of the plate numbers to show the doubling) plus the 15p value light brown omitted (this is illustrated in the catalogue as SH167v1) with a normal for comparison.

Finally at the bottom is the 1986 60th Birthday of Queen Elizabeth II vignette obliterating the country name (SH231v1) in a wonderful gutter pair and finally the 1989 Glacier Formations 58p Queen's head misplaced to the right (SH267v1).

British Antarctic Territory



Figure 2 – Two British Antarctic Territory Varieties (shown at 125% stamp size)

There are two BAT varieties illustrated here, firstly the 1966 Churchill Commemoration 1/- gold misplaced to the left (SH19v2) and the 2001 Restoration of Port Lockroy 33p printed on the gummed side (note the fuzzy printing on the stamp as it was printed on gum. SH 332v1)

A Victorian (and King George VI) Interlude

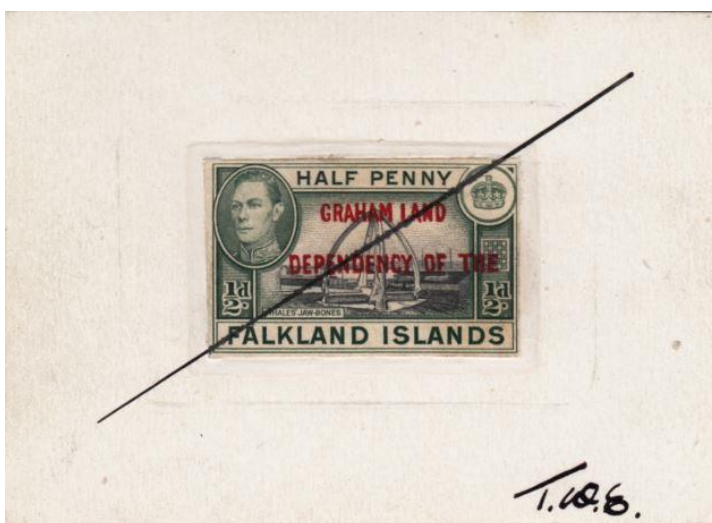


Figure 3 – Victorian and Graham Land Proofs (the Victorian proofs have been increased in size)

We took the opportunity to scan some of Sir Geoffrey's Victorian proofs. The 1878-79 issue had imperforate colour trials on white wove paper, the 1d brown, 6d blue, 1/- green and 1/- olive-black. These are noted on p24 of the latest Heijtz under Proofs and are shown above.

There is also illustrated perhaps the best Falklands proof, the Die proof in red of the 5/- without the country name. This is mentioned on p31 of the Heijtz catalogue.

Finally we show the Graham Land ½d handpainted imperforate essay, listed on p87 of Heijtz.

Modern Falkland Islands Specials



Figure 4 – The three Human Rights Year Varieties: v1, v2 and v3

Sir Geoffrey has examples of all three of the Human Rights Year 2d (SH157) varieties, so we show them here: v1 with the yellow of “1968” completely omitted, v2 with the yellow colour misplaced right and upwards and v3 with the yellow partly (actually considerably!) omitted.



Figure 5 – An example of the 1980 15p Dolphin double print

Sir Geoffrey has the complete set of 1960s through 1980s double prints, we have selected the superb example of the 1980 15p Dusky Dolphin double print (SH299v1) with a clear separated doubling of the black printing.



Figure 6 – 1980s Perforation errors on the Darwin and SS Great Britain Issues

We finish the review of the collection with two of the spectacular perforation errors of the 1980s, that of the 1982 Darwin 34p misplaced perforation (SH349v4) and the two examples of the 1986 SS Great Britain Centenary for the 24p (SH466v1) and 29p (SH467v1) misplaced perforations.

This has been just a selection of the various errors we looked at with Sir Geoffrey, these fit within the space here in the Weekend Supplement, we will follow up with another article in the future looking at some more of his excellent collection.